

# Installing Premise 4.4 on a Network

These instructions explain how to install Premise for multiple users in a network environment and how to install Premise from a network location as an end user in a network environment.

This is a two-part installation:

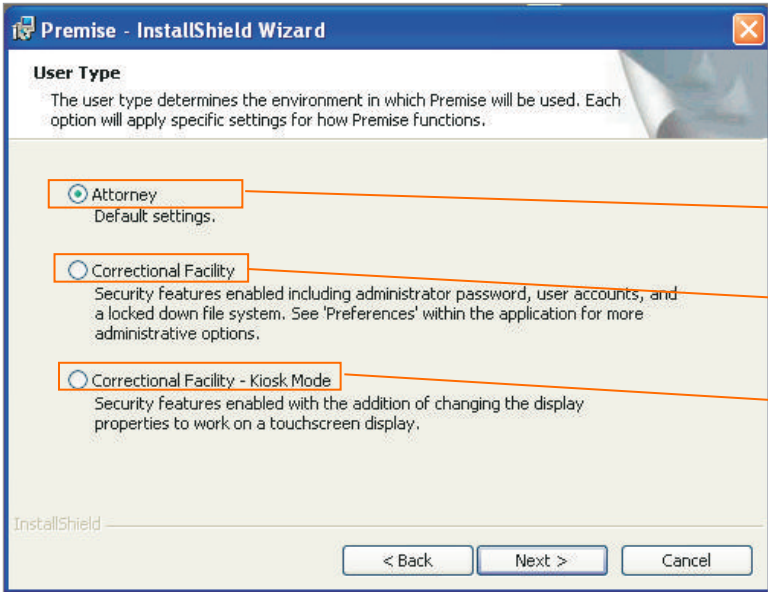
- Site administrator—setting up the installer
- End users—running the installer

## Site Administrator—Setting Up the Installer

The site administrator must have administrative privileges in order to run and set up the customized installer. Complete the following steps to install and set up Premise on a network:

1. Insert the Premise 4 CD-ROM disc into your CD-ROM drive.
2. Choose **Run** from the Windows Start menu.
3. Type **d:\setup /a** (where d is the letter of your CD-ROM drive), then click **OK** to start the network installer.
4. At the Welcome to the InstallShield Wizard for Premise dialog box, click **Next**.

A dialog box similar to the one in Figure 1 is displayed.



- Select **Attorney** to install Premise using the default settings.
- Select **Correctional Facility** to enable security features.
- Select **Correctional Facility—Kiosk Mode** to enable security features and have the display properties work on a touch screen monitor.

Figure 1. User Type dialog box

5. Click **Next**.

A dialog box similar to the one in Figure 2 on the following page is displayed.

For general or technical questions, call West Customer Technical Support at 1-800-888-9907.

For assistance using Westlaw, call 1-800-WESTLAW (1-800-937-8529).

For free reference materials, visit [west.thomson.com/westlaw/guides](http://west.thomson.com/westlaw/guides).

Enter an administrator password in the *Password* text box and re-enter the password in the *Confirm Password* text box. This password will control user options and must be entered when accessing options in Premise.



Figure 2. Administrator Password dialog box

A dialog box similar to the one in Figure 3 is displayed.

Select **New Install (default)** to create a new installation of Premise. Click **Next** and go to step 7.

Select **Premise 4.X Upgrade** or **Premise 3.X Upgrade** to create a new end user installer with a copy of the existing configuration. The location should be accessible to all end users. Click **Next** and follow the on-screen instructions to upgrade to Premise 4.4.

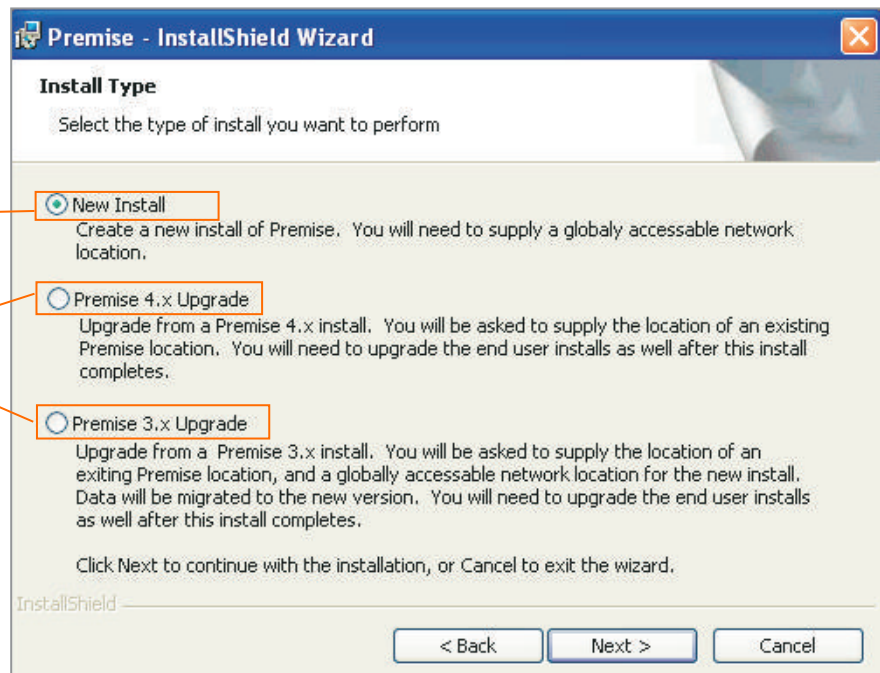


Figure 3. Install Type dialog box

- Select **New Install (default)** to create a new installation of Premise. Click **Next** and go to step 7.
- Select **Premise 4.X Upgrade** or **Premise 3.X Upgrade** to create a new end user installer with a copy of the existing configuration. The location should be accessible to all end users. Click **Next** and follow the on-screen instructions to upgrade to Premise 4.4.

**IMPORTANT:** The Delete Confirmation dialog box allows you to remove files from the old Premise 3.73 location. If you choose to delete files, end users will not be able to run Premise 3.73. The default setting is to not delete the Premise 3.73 files so end users can run Premise 3.73 from the old location until they run the installer for Premise 4.4.

6. Type the path to the location where the administrator installation files will be installed, or click **Change** to navigate to the location, and then click **Next**.

7. Click **Install** at the Ready to Create Install Image dialog box.

8. Click **Finish** when the installation is complete.

Setting up the installer for the network installation is finished. End users now must run the setup.exe file from the network location.

### End Users—Running the Installer

1. Go to the network drive where the network installer is located as per the site administrator.
2. Run **setup.exe** from the network drive.
3. Click **Next** to begin the installation. If you are upgrading from Premise 3.X, go to step 7.

A dialog box similar to the one in Figure 4 is displayed:

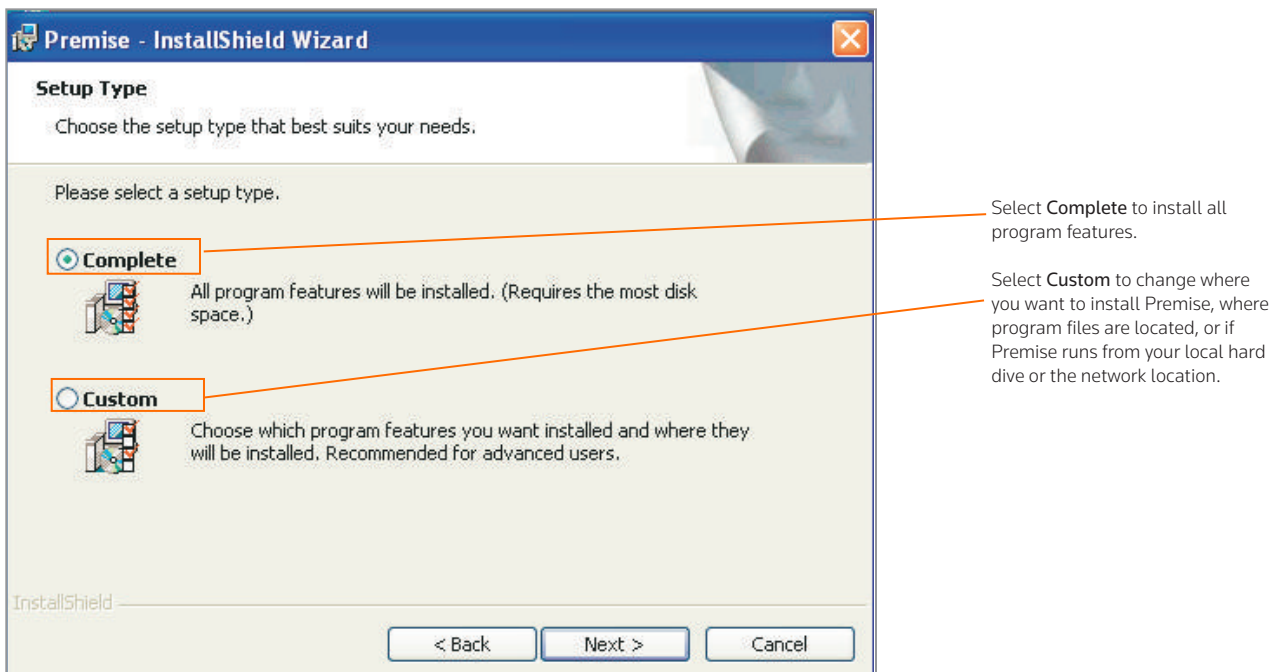


Figure 4. Setup Type dialog box

- Select **Complete** to install all program features. Click **Next** and go to step 7.
- Select **Custom** to change the location where Premise is to be installed, where program files are located, or if you want Premise to run from your local hard drive or the network location. The default location of Premise files is C:\ Program files\ West Group\ Premise. If you select **Custom**, click **Next**.

If you select *Custom*, a dialog box similar to the one shown in Figure 5 is displayed:

Click the down arrow, then select **This feature, and all subfeatures, will be installed to run from the network** if you want to run Premise from the network location.

Click **Change** to select where you want Premise installed.

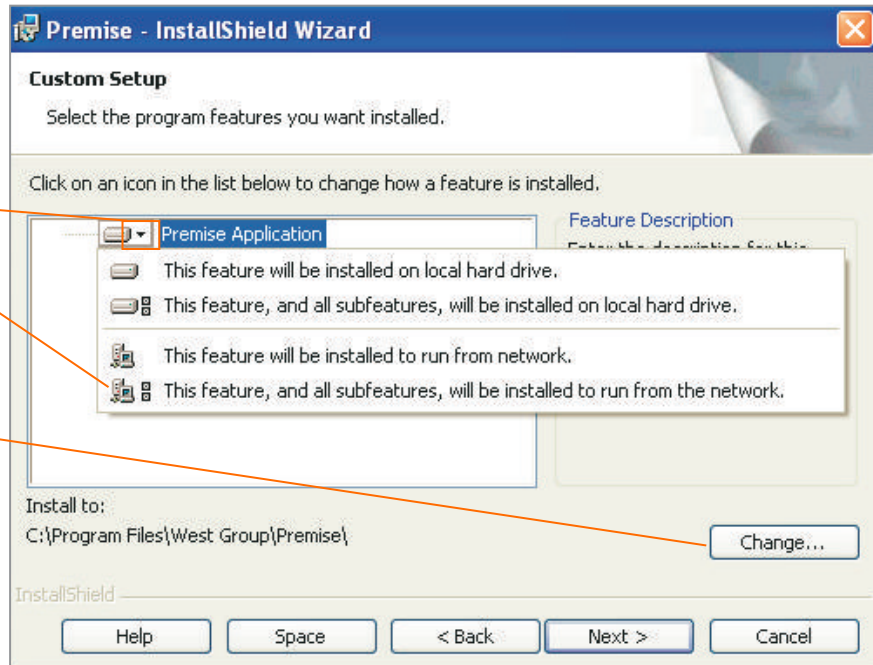


Figure 5. Custom Setup dialog box

4. If you want to run Premise from the network location, click the down arrow next to *Premise Application* and select **This feature, and all subfeatures, will be installed to run from the network**.

**Note:** If you choose to run from the network, the **Change** button is disabled and you are not allowed to choose the network location.

5. If you want to change the location where Premise will be installed, click the **Change** button and select where you want Premise installed.
6. After you make your changes, click **Next**.
7. Click **Install** at the Ready to Install the Program dialog box.
8. Click **Finish** to complete the installation.

