

# West Case Timeline Viewer Installation and Quick Reference Guide

West Case Timeline Viewer makes it easy to share and view West Case Timeline files. With the free West Case Timeline Viewer, you can

- open and view timeline files created with West Case Timeline
- open and view a timeline file created from a Westlaw® PeopleMap report
- print charts and chronologies
- present timelines
- insert timelines into Microsoft® PowerPoint® presentations

**Note** West Case Timeline Viewer can be integrated with Microsoft PowerPoint 2003 and Microsoft PowerPoint 2007 so you can view timelines in a PowerPoint presentation. If you have West Case Timeline Viewer installed on a computer with PowerPoint, a toolbar like the one shown below is displayed so you can easily move through the presentation.



To share your timelines with others, send the timeline (.t1m or .t1mz) file and the download link for the free West Case Timeline Viewer. The files in West Case Timeline Viewer are read-only so events and charts cannot be modified.

## System Requirements

### SUPPORTED OPERATING SYSTEMS

- Windows® 2000
- Microsoft Windows XP Service Pack 2
- Windows Vista® Business (32- or 64-bit)
- Windows Vista Home Premium (32- or 64-bit)
- Windows 7 Home Premium (32- or 64-bit)
- Windows 7 Professional (32- or 64-bit)
- Citrix Presentation Server 4.5 with Feature Pack 1 or XenApp 5 (Citrix Presentation Server is now called XenApp)

### HARDWARE

- IBM PC or compatible computer with 833 MHz processor
- 256 MB of RAM
- 23 MB of available hard disk space

### OTHER REQUIREMENTS

- Internet connection
- Adobe Acrobat 5.0 or later

For assistance using West Case Timeline, call 1-800-290-9378.

For free reference materials, visit [west.thomson.com/support/user-guide/case-timeline.aspx](http://west.thomson.com/support/user-guide/case-timeline.aspx).

## Download the West Case Timeline Viewer

The following steps will help you download the trial version of West Case Timeline Viewer:

1. Go to [west.thomson.com/software/timeline/welcome.aspx](http://west.thomson.com/software/timeline/welcome.aspx).
2. Click **Get the free West Case Timeline Viewer now** to display the West Case Timeline Viewer Registration page.
3. Complete the registration page and click **Proceed with Download**. The West Case Timeline Viewer Download page is displayed.
4. Click **Proceed with Download**. The InstallShield Wizard for West Case Timeline dialog box is displayed (Figure 1).

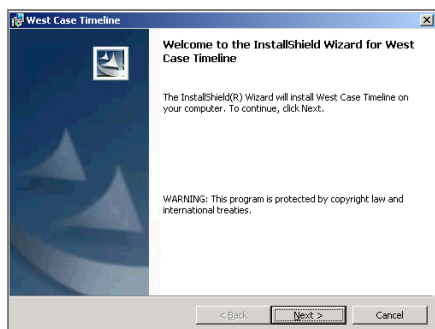


Figure 1. InstallShield Wizard for West Case Timeline dialog box

5. Click **Next**. The Licence Agreement dialog box is displayed (Figure 2).



Figure 2. Licence Agreement dialog box

6. Scroll to the bottom of the license agreement as you read it, then select **I AGREE** and click **Next**. The Customer Information dialog box is displayed (Figure 3).

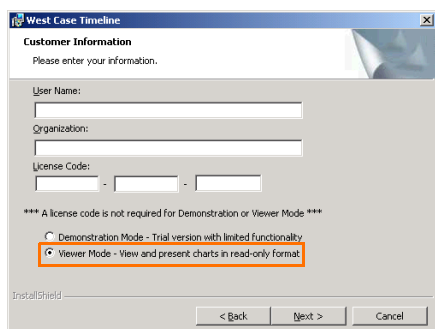


Figure 3. Customer Information dialog box

7. Type your name and organization in the *User Name* and *Organization* text boxes, then select **Viewer Mode–View and present charts in read-only format** and click **Next**. The Destination Folder dialog box is displayed (Figure 4).

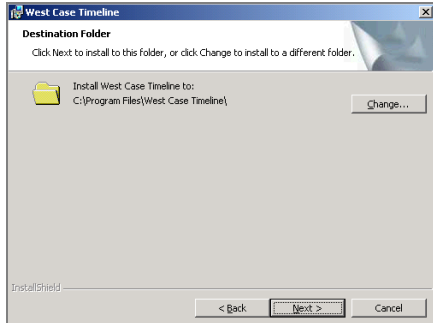


Figure 4. Destination Folder dialog box

8. Click **Next** to install West Case Timeline Viewer in the Program Files folder. The Ready to Install the Program dialog box is displayed (Figure 5).

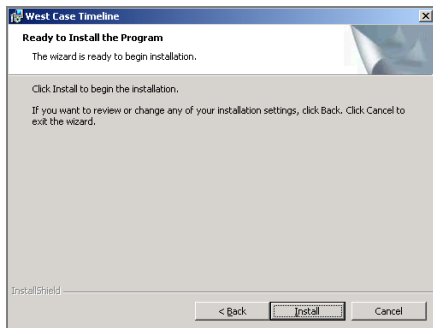


Figure 5. Ready to Install the Program dialog box

9. Click **Install**. The InstallShield Wizard Completed dialog box is displayed indicating that West Case Timeline has been successfully installed (Figure 6).

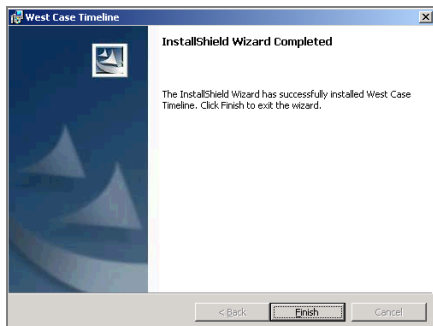



Figure 6. InstallShield Wizard Completed dialog box

10. Click **Finish**.

## Using West Case Timeline Viewer

To access West Case Timeline Viewer, complete these steps:

1. Double-click the **West Case Timeline** icon  that was placed on your computer's desktop during installation. The West Case Timeline start-up dialog box is displayed (Figure 7).

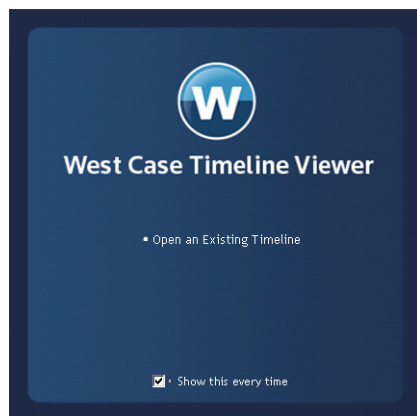



Figure 7. Start-up dialog box

2. Click **Open an Existing Timeline**. The Open dialog box is displayed.
3. Select the file you want to view and click **Open**. The Chart tab is displayed.
4. Choose **Presentation** from the View menu or click the **View Presentation** button  on the Standard toolbar to start the presentation.

## Performing a Silent Installation

It is recommended that an experienced information technology specialist execute a silent installation. Previous versions of West Case Timeline must be uninstalled before a silent installation is run.

To run a silent installation, type the following command at a command prompt:

```
"EXEPATH"/S /V" /qn INSTALL_MODE=2 " INSTALLDIR="C:\Install Here\" USERNAME="User\" COMPANYNAME="Company\""
```

where

EXEPATH is the path to the setup.exe file, e.g., C:\Documents and Settings \Administrator \Desktop\WCTimelineInstaller.exe.

**Note** INSTALLDIR, USERNAME, and COMPANYNAME are optional parameters.

## Performing a Silent Uninstallation

To run a silent uninstallation, type the following command at a command prompt:

```
Msiexec.exe /x{8904D1D6-B411-4E61-AC1E-9EE97B0FBD0D} /qn"
```

