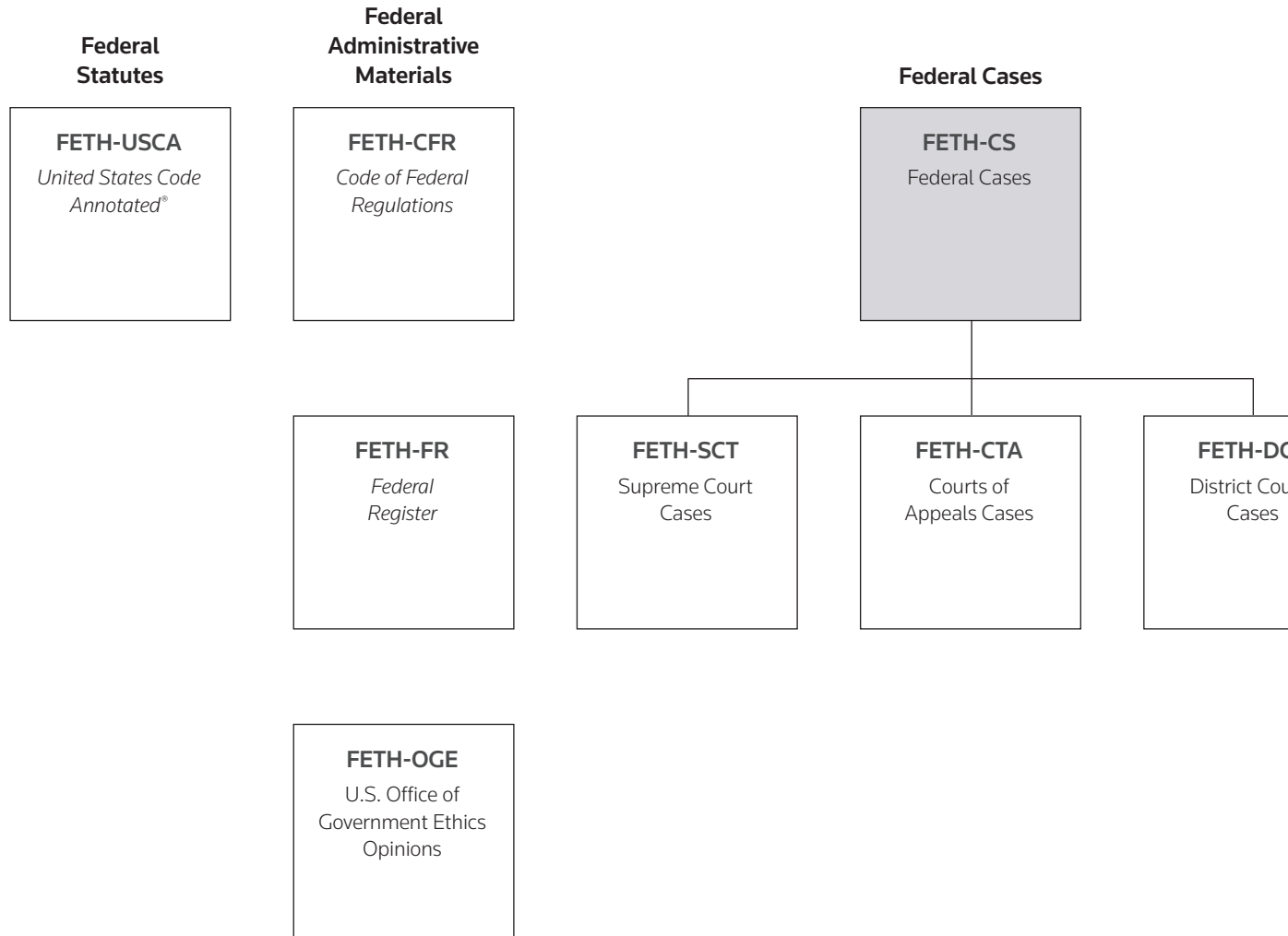




SELECTED MATERIALS: LEGAL ETHICS AND PROFESSIONAL RESPONSIBILITY



 Combined database

*For individual states currently available, see the Westlaw Directory.



SIBILITY

State Cases, Ethics Opinions, and Court Rules

METH-CS
Multistate Cases

METH-EO
Multistate Ethics Opinions*

RULES-ALL
State Court Rules

American Bar Association (ABA) Materials

ABA-ETHOP
ABA Ethics Opinions

AMBAR
ABA – Summaries

ABA-RLDE
ABA Model Rules for Lawyer Disciplinary Enforcement

ABA-AMRPC
ABA Annotated Model Rules of Professional Conduct

ABA-CJC
Code of Judicial Conduct

ABA-BNA
ABA/BNA Lawyers' Manual on Professional Conduct

ABA-SILS
ABA Standards for Imposing Lawyer Sanctions

ABA-RLFCP
ABA Model Rules for Lawyers' Funds for Client Protection

ABA-MRPC
ABA Model Rules of Professional Conduct

ABA-CJC-OLD
Code of Judicial Conduct (1972 and 1990 versions)

Law Reviews, Legal Texts, and Periodicals

ETH-TP
Law Reviews, Texts, and Bar Journals

Restatement of the Law

REST-LGOVL
Restatement of the Law Third—The Law Governing Lawyers

American Judicature Society (AJS) Materials

JCR
Judicial Conduct Reporter