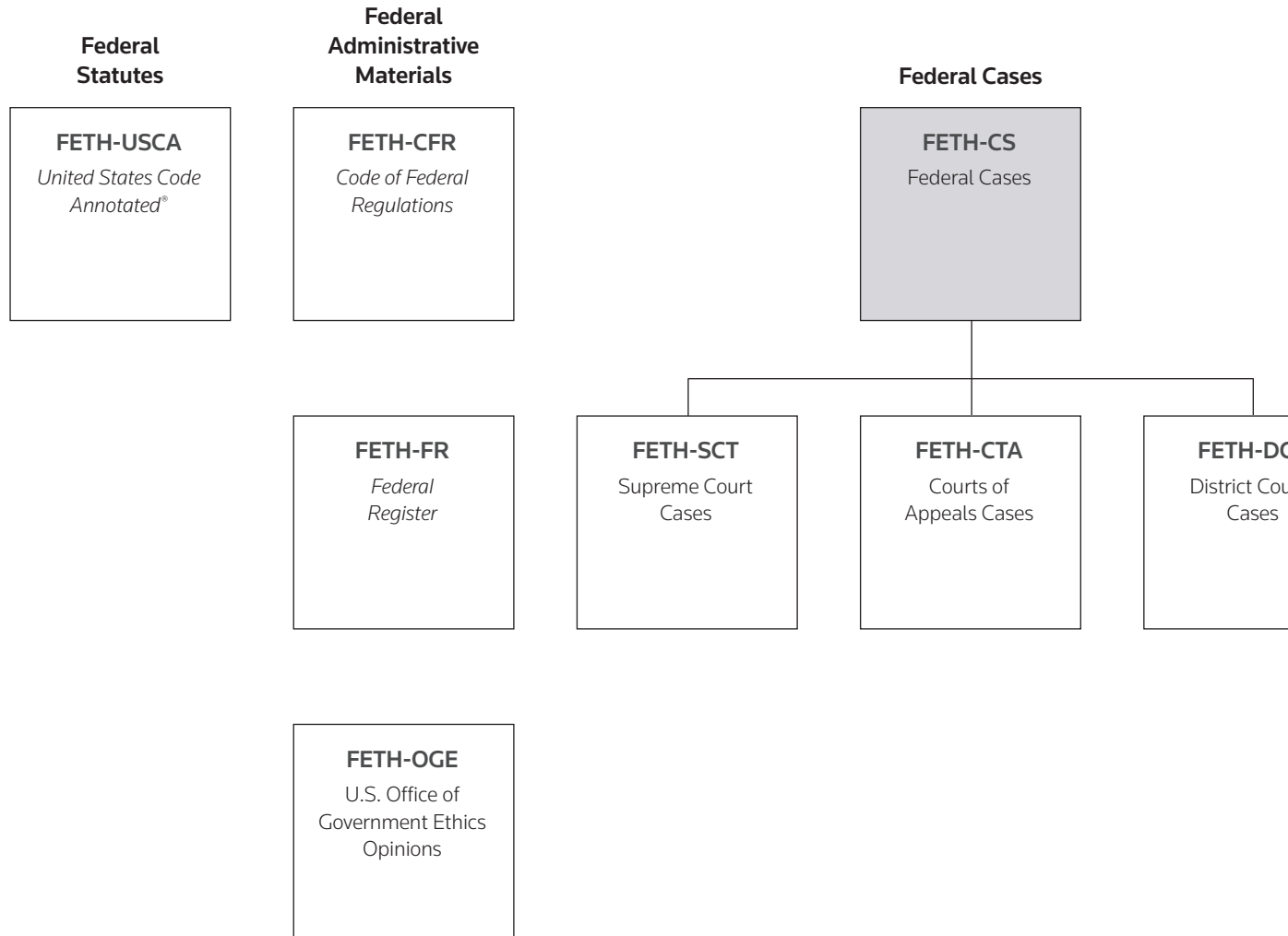


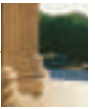


SELECTED MATERIALS: LEGAL ETHICS AND PROFESSIONAL RESPONSIBILITY



 Combined database

*For individual states currently available, see the Westlaw Directory.



SIBILITY

State Cases, Ethics Opinions, and Court Rules

METH-CS

Multistate Cases

METH-EO

Multistate Ethics Opinions*

RULES-ALL

State Court Rules

American Bar Association (ABA) Materials

ABA-ETHOP

ABA Ethics Opinions

AMBAR

ABA – Summaries

ABA-RLDE

ABA Model Rules for Lawyer Disciplinary Enforcement

ABA-AMRPC

ABA Annotated Model Rules of Professional Conduct

ABA-CJC

Code of Judicial Conduct

ABA-BNA

ABA/BNA Lawyers' Manual on Professional Conduct

ABA-SILS

ABA Standards for Imposing Lawyer Sanctions

ABA-RLFCP

ABA Model Rules for Lawyers' Funds for Client Protection

ABA-MRPC

ABA Model Rules of Professional Conduct

ABA-CJC-OLD

Code of Judicial Conduct (1972 and 1990 versions)

Law Reviews, Legal Texts, and Periodicals

ETH-TP

Law Reviews, Texts, and Bar Journals

Restatement of the Law

REST-LGOVL

Restatement of the Law Third—The Law Governing Lawyers

American Judicature Society (AJS) Materials

JCR

Judicial Conduct Reporter