

# CHAP 7.13 BANKRUPTCY FILING SOFTWARE

The fastest e-filing is also the easiest ...

## ENERGIZE YOUR PRACTICE.

*Exclusive Chap 7.13 features help you meet today's changing requirements in bankruptcy law and practice!*

### What is it?

- A way to streamline your case filing and management with the breakthrough efficiencies of one-time data entry, electronic tools, and court-ready online filing

### What format is it in?

- CD-ROM with periodic updates from website

### How can it help me?

- Helps you process more cases in less time
- Ensures accuracy with electronic math and creditor sorting
- Automatically prepares the forms you need
- Lets you preview schedules at any time
- Lets you import credit reports through Suite Solutions
- Optional module speeds and simplifies the preparation of Chapter 13 plans
- Equips you to file court documents electronically
- Sign up for notification by email when downloadable; online updates become available (signup required)
- Links directly from the program to cutting-edge legal research on Westlaw® (Westlaw subscription required)

## Everything you need – on one CD-ROM.

*Chap 7.13 Bankruptcy Filing Software* lets you create and file most commonly used documents in a bankruptcy filing – without leaving your desk!

### The Chap 7.13 CD-ROM includes:

- All official bankruptcy forms to file petitions and accompanying documents for all chapters of the bankruptcy code – all forms updated as necessary
- All state and federal exemptions for your jurisdiction
- Improved means test utility that quickly and easily completes calculations as required by the Bankruptcy Abuse Prevention and Consumer Protection Act (BAPCPA); Census Bureau and IRS tables with regional, state, and local data necessary to complete the means test; data automatically flows onto forms
- Internal PDF editor
- Automatic math calculation and creditor sorting
- One-time data entry
- Fast, reliable tracking of case status
- FREE technical support from West
- Research links to Westlaw treatises and caselaw (New April 2010)

## Simplified electronic filing helps you meet changing court requirements.

*E-File Express* makes it easy to draft and file bankruptcy documents electronically.

- Most bankruptcy courts already use the Case Management/Electronic Case Files (CM/ECF) system included in *Chap 7.13*; many mandate it
- All courts were required to update to CM/ECF Version 3.1 in October of 2008. *Chap 7.13* was ready with a system that automatically detects your court's filing system
- With *Chap 7.13*, you have everything you need to comply with the latest court requirements

## Optional *Plan 13* module offers exclusive BAPCPA opportunity!

Chapter 13 is likely to play a larger role in bankruptcy practice under BAPCPA. *Plan 13* helps you profit from this opportunity:

- Automatically generates Chapter 13 plans
- Helps you do hours of manual calculations in minutes!
- Sorts creditors into different classes and payment rates
- Offers a narrative plan for your district
- Allows you to edit text and format plans within software

## Suite Solutions, formerly known as Online Credit Reporting (OCR), helps you meet your new due diligence obligations.

Suite Solutions (not a Thomson company) simplifies your investigation by letting you download tri-bureau credit reports directly into creditor fields in *Chap 7.13*. (Requires service agreement, nominal set-up fee, and charges for each report ordered.)

### Suite Solutions credit reports help you:

- Accurately and quickly enter debtor and creditor information
- Double-check the creditors to list in a filing
- Get details on judgments, mortgages, credit cards, and other liens
- Also available through Suite Solutions: rapidly retrieve IRS transcripts, obtain real estate and vehicle valuations, link to credit counseling and debtor education companies

For more information on Suite Solutions, please visit [www.suitesolutions.info](http://www.suitesolutions.info).



### Case Information Window

Fill out your case information, which then flows directly into the latest version of official forms.

The Case Explorer window displays case details for John Doe, Chapter 7, Individual. The left sidebar lists sections like Case Information, Schedules A through F, Exemptions, and more. The main area shows a 'Case Name' field and certification checkboxes. A research panel on the right provides links to 'Norton Bankruptcy Law and Practice 3d' and 'Bankruptcy Law Manual'.

### Petition

All forms can now be edited with an internal PDF editor (shown) or an internal word processor.

### Research

Easily access research references and Westlaw from within the program.

### Statement of Current Monthly Income and Means Test Calculation

Means Test Utility:

- Automatically inserts IRS and Census Bureau data
- As you fill out form, automatically does math and shows summary information
- Indicates whether or not presumption of abuse arises

The Means Test Utility window features a table for selecting a state and family size. Below the table are fields for 'Annual Income (13)', 'Median Family Income (14)', and '60 Month Disposable (51)'. A 'Presumption of abuse arises' checkbox is present, along with a 'Debtor Background Information' section for residence details.

State	Family Size 1	Family Size 2	Family Size 3	Family Size 4
ALABAMA	32762	39735	46957	54139
ALASKA	43709	59980	68140	76369
ARIZONA	35648	46429	51348	58187
ARKANSAS	28949	37178	41231	49790
CALIFORNIA	42012	53506	59633	68310
COLORADO	40044	54187	58565	66664
CONNECTICUT	51530	61374	70506	80276
DELAWARE	389			
DISTRICT OF COLUMBIA	383			
FLORIDA	318			
GEORGIA	292			
GUAM	311			
HAWAII	465			
IDAHO	325			
ILLINOIS	416			
INDIANA	335			
IOWA	335			
KANSAS	268			
KENTUCKY	291			
LOUISIANA	330			
MADRID	361			
MARYLAND	460			
MASSACHUSETTS	471			
MICHIGAN	403			
MINNESOTA	408			
MISSISSIPPI	282			
MISSOURI	335			
MONTANA	306			
NEBRASKA	338			
NEBRASKA	338			

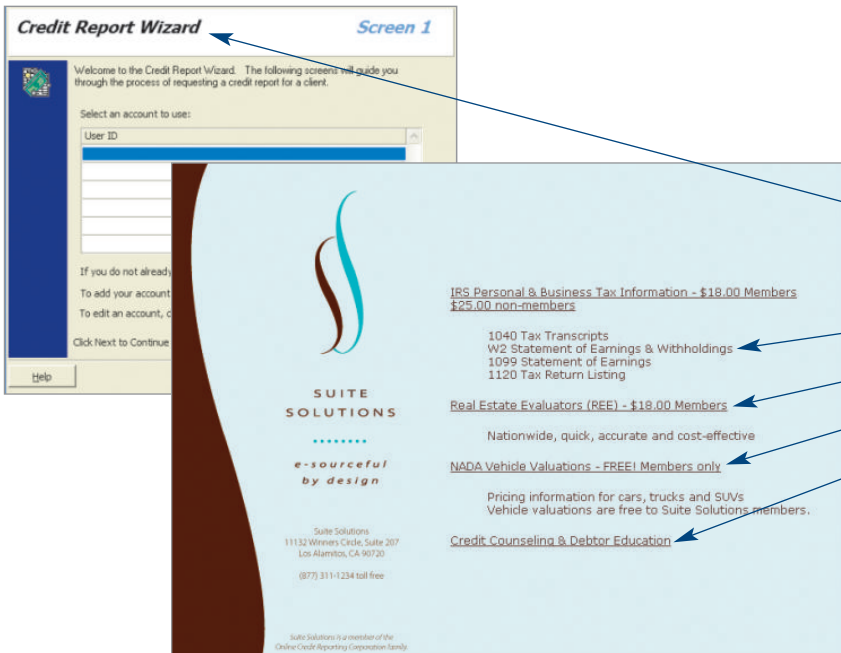
### Means Test Screen

Fields with padlock icon auto-fill with means test data. Clicking on padlock icon allows you to unlock any data field to customize the number to fit your client's situation.

All fields with calculator icon allow for entering/saving data and allow calculating six-month average or other calculations.

The Means Test Calculation screen includes a table for 'Local Standards: transportation ownership/lease expense; Vehicle 1'. It shows fields for 'Average Monthly Payment for any debts secured by Vehicle 1' and 'Net ownership/lease expense for Vehicle 1'. A calculator window is open, showing a result of 56.67.

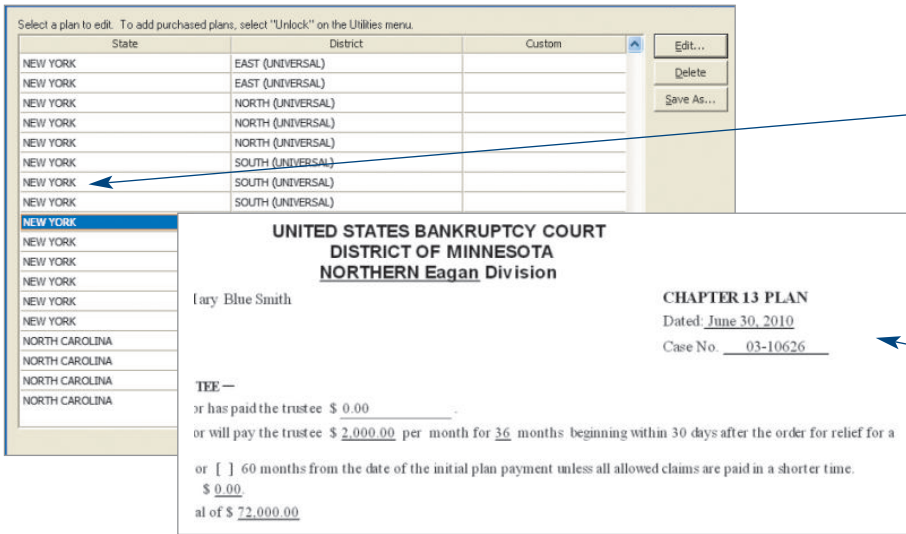
Line	Description	Amount
a	IRS Transportation Standards, Ownership Costs, Vehicle 1	\$333.33
b	Average Monthly Payment for any debts secured by Vehicle 1, as stated in Line 47	\$56.67
c	Net ownership/lease expense for Vehicle 1	\$276.66



### Credit Report Wizard

Suite Solutions interface gives you access to:

- Credit report data you can download directly into client files
- IRS information
- Real estate valuations
- NADA vehicle valuations
- Links to credit counseling and debtor education services

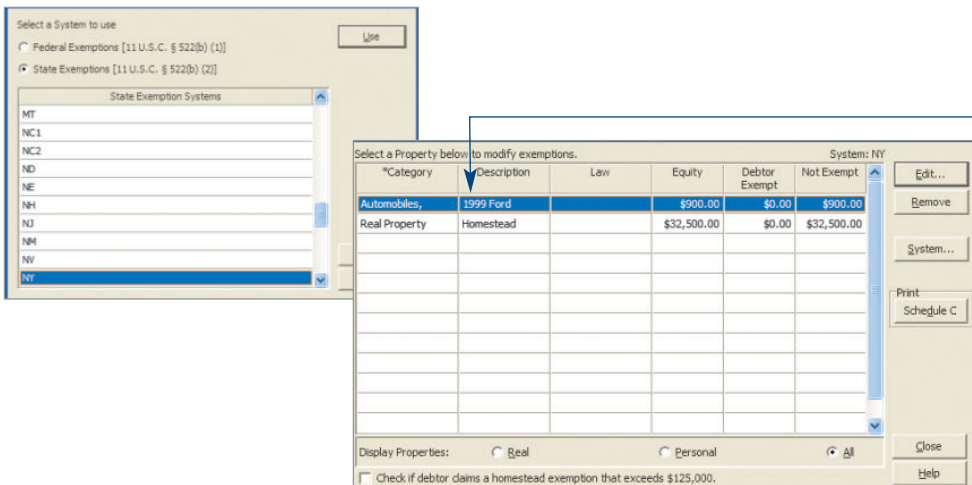


### Plan List Window

Optional *Plan 13* lets you select your jurisdiction's plan, review creditor claims and print out plan.

### Chapter 13 Plan

Edit text and formatting of Chapter 13 plans.



### Exemptions List Window

Pick your exemptions system and easily match property to exemptions.

## Chap 7.13 (continued)

### How Chap 7.13 makes your work go easier and faster.

Among the many user-friendly *Chap 7.13* features you'll appreciate are:

- **E-File Express**
  - Word processor and PDF editor included
- **Greater versatility**
  - Generation of amended schedules
  - Simpler saving and moving of individual cases
  - Local forms included at your request
  - Updating via Internet whenever forms or data change
- **Trouble-free connectivity**
  - Runs on Microsoft® Windows® 2000, XP and Windows NT® 4.0 (not supported on Windows 3.1)
  - 32-bit application
  - Microsoft Access as database manager
- **Easy-to-read graphics**
  - Support of larger screen fonts
  - Resizeable windows
- **Time-saving content**
  - Official and practice forms – including local forms
  - Optional coverage of Plan 13
  - Payback calculator that does the math
  - Narrative plan for your district
  - Automatic data entry
  - Research reference links directly into Westlaw
- **Unsurpassed customer support**
  - Free customer technical support and West reference attorneys
  - Free quarterly newsletter with tips on bankruptcy practice and *Chap 7.13* news
  - Helpful customer information and links available online
- **Rapid online transfers**
  - Importation of credit reports directly into creditor fields in the program
  - Easy e-filing with E-File Express
  - Use CM/ECF from within the program
  - File PDFs, created easily using the internal PDF writer

### System Requirements

- Pentium 4 or AMD Athlon processor (or higher)
- Microsoft Windows 7 (32-bit only), Windows Vista® (32-bit and 64-bit), Windows XP, or Windows 2000
- 500 MB hard-disk space
- 512 MB of available RAM
- CD-ROM drive
- 800 x 600 (or higher) resolution monitor
- Internet Explorer® 5.5 or later (required for Electronic Case Filing)

For more information, visit  
[west.thomson.com](http://west.thomson.com) or call 1-800-762-5272